

## Components

---

- Bases
- Tubes
- T-pieces
- Accessories



## Components

To realise your individual requirements and design ideas, below you will find the main OEK-components, which can be combined for manifold applications. We gladly will assist you to create your special promotion stand.

### Stepped base DEKO I



Made of plastics with steel inlay, base Ø 160 mm, to take tubes Ø 16 mm or Ø 12 mm, colours: black, turquoise, silver.

- Ø 16 mm**  
20450-xx.....SU 10
- Ø 12 mm**  
20452-xx.....SU 10

### Pyramid base DEKO II



Made of plastics with steel inlay, base Ø 160 mm, to take tubes Ø 16 mm or Ø 12 mm, colours (top/bottom): yellow/blue, black/yellow, black/red, ultramarine/ultramarine blue, darkblue/yellow, black/chromium, silver/silver.

- Ø 16 mm**  
20460-xx.....SU 10
- Ø 12 mm**  
20462-xx.....SU 10

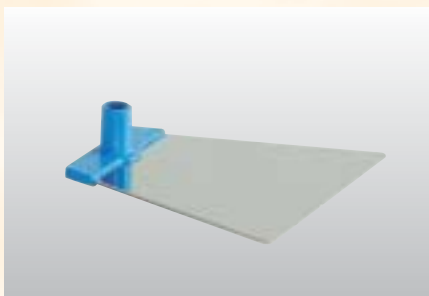
### Base N



Base N made of stainless steel with tube holder Ø 12 mm made of plastics in OEK standard colours, cream, ultramarine blue, brown, light red. Size: 185x160 x1,5 mm

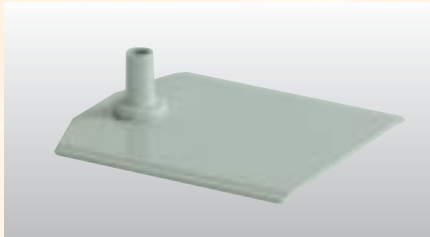
- 20300-xx.....SU 10

### Base NT



Trapezoid base made of stainless steel with tube holder Ø 14 mm or Ø 12 mm in OEK standard colours. Size: 165(80)x160x1,5 mm

- Ø 14 mm**  
20400-xx.....SU 10
- Ø 12 mm**  
20401-xx.....SU 10



**Base BK**

Metal base powder coated grey with tube holder Ø 12 mm, grey.  
Size: 185x160x2,5 mm

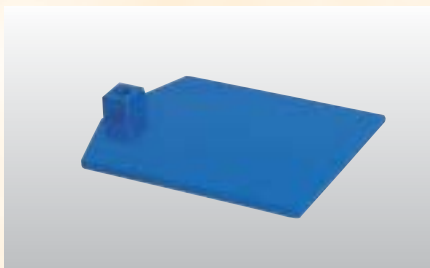
20310-03/03 .....SU 10



**Base SK**

Metal base powder coated black with tube holder Ø 12 mm, black.  
Size: 185x160x 1,5 mm

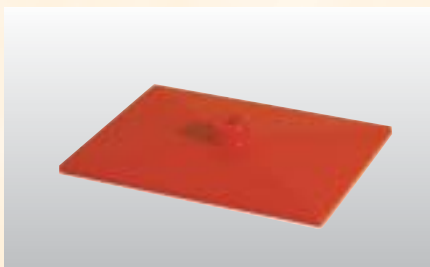
20320-10 .....SU 10



**Base KB**

Made of plastics with zinc metal inlay, to take tubes Ø 12 mm, in OEK standard colours. Size: 200x160x6 mm

20360-xx .....SU 10



**Base K**

Made of plastics to take tubes Ø 12 mm, in OEK standard colours. Size: 200x150 mm. Also available with zinc metal inlay.

**Base K**  
20350-xx .....SU 10

**With metal inlay**  
20351-xx .....SU 10



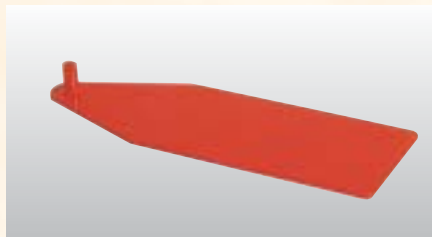
**Base KL**

Made of plastics to take tubes Ø 12 mm or Ø 6 mm, for showcard stands with frames A5 and A6, colours: white, grey.  
Size: 140x90 mm

**Ø 12 mm**  
20380-xx .....SU 10

**Ø 6 mm**  
20380-xx/12-6 .....SU 10

## Base RS



Made of plastics to take t-piece or hinge, in OEK standard colours.  
Size: 250x90x3 mm

20390-xx.....SU 10

## Base L



Made of plastics with patented Levistor rubber plate, to take tubes Ø 12 mm, colours: white, grey, blue.  
Size: Ø 160 mm, 4 mm thickness

20340-xx.....SU 10



## Base K round



Made of plastics, round, to take tubes Ø 12 mm, colours: white, grey, blue.  
Size: Ø 160 mm, 4 mm thickness

20340-99/xx.....SU 10

## Base BD



Heavy steel plate without tube holder (will be mounted to BD-tubes), powder coated, colours: white, silvergrey, black.  
5 mm thickness

**Ø 160 mm (0,6 kgs)**  
20330-xx.....SU 10

**Ø 255 mm (2,0 kgs)**  
20331-xx.....SU 10

**Ø 345 mm (3,8 kgs)**  
20334-xx.....SU 10

## SB tube holder for tubes Ø 12 mm



For self-mount to bases N, BK, SK, BD Ø 160 mm, as well as to special devices with M5 hole, premounted with nut M5 and screw, grey.

20200-03.....SU 10



### Hexagonal key

---

Hexagonal key to mount SB tube holder, black.

96-240103 .....SU 10



### MF magnetic base

---

Magnetic base with 4 or 2 magnets, grey, to take tubes Ø 12 mm. Size: 100x40 mm

#### 4 magnets

20370-03 .....SU 10

#### 2 magnets

20372-03 .....SU 10



### Magnetic base MF with hinge NS

---

Magnetic base with 4 magnets and hinge NS grey to take tubes Ø 12 mm, for an inclined standing. Size: 100x40 mm

20373-03 .....SU 10



### Hinge NS

---

Hinged connector between bases Ø 12 mm (such as N, BK, SK, L, MF) and tubes Ø 12 mm, for an inclined standing or to equalise inclined ground, made of plastics, grey.

20271-03 .....SU 10





## Fixed chromium tube

---

Fixed chromium tube, top with reduced diameter, tube/top Ø: 10 mm, tube/bottom Ø: 12 mm. Also available with threaded bolt M8 or M10.

- 160 mm**  
20100-35/160.....SU 10
- 310 mm**  
20100-35/310.....SU 10
- 410 mm**  
20100-35/410.....SU 10
- 600 mm**  
20100-35/600.....SU 10



## Adjustable chromium tube

---

Adjustable chromium tube, internal tube Ø: 10 mm, external tube Ø: 12 mm. Also available with threaded bolt M8 or M10.

- 200-360 mm**  
20140-35/-360.....SU 10
- 320-620 mm**  
20140-35/-620.....SU 10
- 450-900 mm**  
20140-35/-900.....SU 10
- 600-1200 mm**  
20140-35/-1200.....SU 10



## Adjustable chromium tube with lever clamp

---

Adjustable chromium tube 320 - 620 mm with plastic lever clamp grey, internal tube Ø: 10 mm, external tube Ø: 12 mm

- 20144-03/-620.....SU 10

### Adjustable plastic tube



Adjustable tube, glass-fibre reinforced plastics in black, 320 - 620 mm, internal tube Ø: 10 mm, external tube Ø: 12 mm

20162-10.....SU 10

### Plastic tube NT



Adjustable plastic tube clear or white, 320 - 620 mm, with tube fixing in OEK standard colours, internal tube Ø: 10 mm, external tube Ø: 14 mm

**Clear**

20167-00/xx.....SU 10

**White**

20167-01/xx.....SU 10

### Hinge NS for T-piece



Hinged connector between tube (Ø 10 mm) and t-piece, upper part Ø 12 mm with fitted MF connector 50 mm long, for inclined presentation of frames. Made of grey plastics.

20269-03.....SU 10

### MF connector



Made of clear plastics, lengths: 50, 75 und 110 mm, bottom Ø: 12 mm, top Ø: 10 mm

**50 mm**

20170-00.....SU 10

**75 mm**

20171-00.....SU 10

**110 mm**

20172-00.....SU 10



### Chromium tube BD

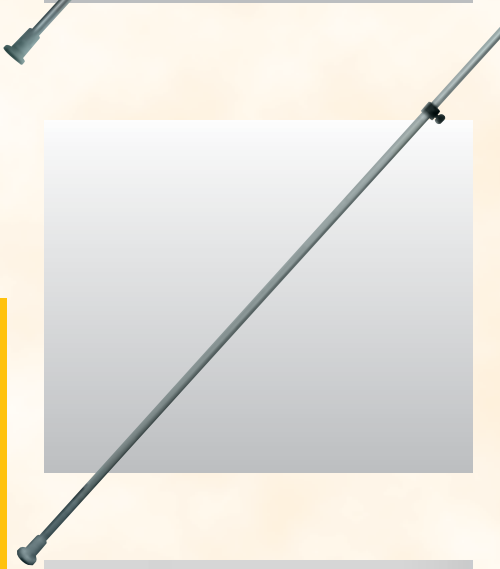
Adjustable chromium tube, with bolt on top (Ø 10 mm) to take t-piece, mounted with tube holder in white, silvergrey or black, suitable for bases BD Ø 255 mm and Ø 345 mm only, internal tube Ø: 15 mm, external tube Ø: 18 mm

**1000-1700 mm**

20176-xx.....SU 10

**300-600 mm**

20174-xx/300-600.....SU 10



### Aluminium tube BD 1300-2500 mm

Adjustable aluminium tube, with bolt on top (Ø 10 mm) to take t-piece, mounted with tube holder in white, silvergrey or black, suitable for bases BD Ø 255 mm and Ø 345 mm only, internal tube Ø: 16 mm, external tube Ø: 20 mm

15736-91/-2500/xx.....SU 10



### Dekoline tube

Fixed aluminium tube Ø 16 mm, suits Dekoline t-piece, 320 mm length, colours: alu-anodised, white, black

**Anodised aluminium**

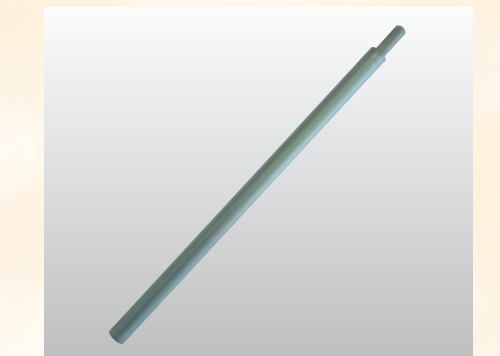
15710-91/320.....SU 10

**White**

15710-01/320.....SU 10

**Black**

15710-10/320.....SU 10



### TWINSET tube

Fixed aluminium tube Ø 16 mm with bolt on top (Ø 10 mm), 320 mm length, to take TWINSET frame, colours: alu-anodised, black

**Anodised aluminium**

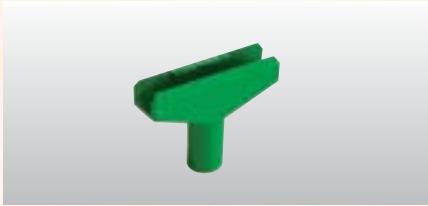
15712-91/320.....SU 10

**Black**

15712-10/320.....SU 10



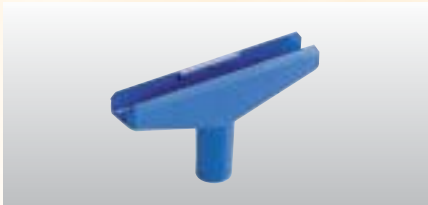
**T-piece 60 mm (series 100)**



Recommended for frames A6 - A5,  
colours: OEK standard colours, clear

20010-xx.....SU 10

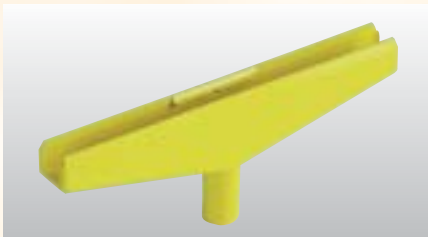
**T-piece 90 mm (series 100)**



Recommended for frames A4 - A3,  
colours: OEK standard colours, cream,  
ultramarine blue, brown, light red, clear,  
silver, chromium, gold

20011-xx.....SU 10

**T-piece 160 mm**



Recommended for larger frame sizes,  
colours: OEK standard colours, clear, silver  
(series 200 only)

**(series 100)**  
20012-xx.....SU 10

**(series 200)**  
20022-xx.....SU 10

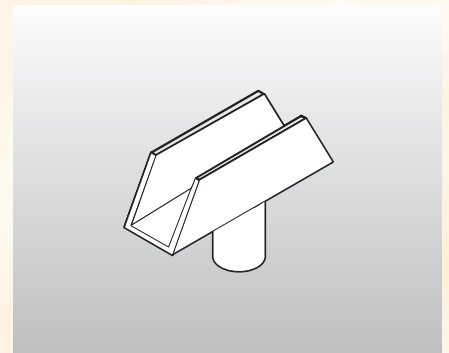
**T-piece 550**



Suits frames series 500 such as Woodline,  
Alu-profile frames and plug-in plastic frames,  
to be used with tubes Ø 16 mm or  
10 mm, length 100 mm, recommended  
up to size A2. Colours: clear, white, grey,  
red, black

**Ø 16 mm**  
20050-xx.....SU 10

**Ø 10 mm**  
20053-xx.....SU 10





## Holder FL

Holder FL in white, grey and chromium, to take tubes Ø 10 mm, with FL rod adjustable up to 470 mm, for posters up to size A3. Chromium tubes to be ordered separately.

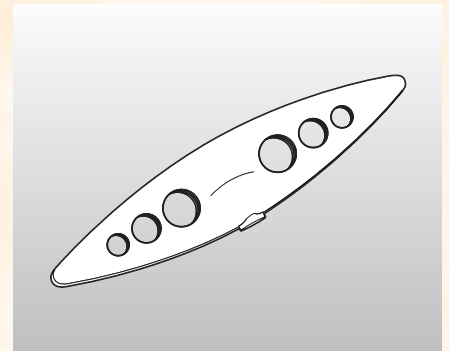
20190-xx.....SU 10



## Holder ONDA

Elegant plastic support for acrylic cover, suits tubes Ø 10 mm, colours: grey, red, ultramarine blue, silver

20080-xx.....SU 10



## Acrylic cover

Suits holder ONDA, bent acrylic, 2 mm thickness, clear

### A5 landscape

29505-00.....SU 10

### A4

29504-00.....SU 10

**PVC poster protectors**

---



For showcard frames of same DIN size, folded short side, thickness 0,3 mm (A1 0,4 mm), non reflective, clear

<b>A6</b>	
29260-00	.....SU 10
<b>A5</b>	
29250-00	.....SU 10
<b>A4</b>	
29240-00	.....SU 10
<b>A3</b>	
29235-00	.....SU 10
<b>A2</b>	
29220-00	.....SU 10
<b>A1</b>	
29210-00	.....SU 10

**PVC cutting**

---

For showcard frames of same DIN size, thickness according to size 0,3 mm (A6 - A3) and 0,55 mm, non reflective, clear

<b>A6</b>	
29060-00	.....SU 10
<b>A5</b>	
29050-00	.....SU 10
<b>A4</b>	
29040-00	.....SU 10
<b>A3</b>	
29030-00	.....SU 10
<b>A2</b>	
29020-00	.....SU 10
<b>A1</b>	
29010-00	.....SU 10
<b>A0</b>	
29000-00	.....SU 10
<b>50 x 70 cm</b>	
29072-00	.....SU 10
<b>70 x 100 cm</b>	
29073-00	.....SU 10

## PS slate

---



Made of polystyrene, slate coated both sides, for showcard frames of same DIN size, thickness 1 mm, rounded edges, black

### A6

29660-10 .....SU 10

### A5

29650-10 .....SU 10

### A4

29640-10 .....SU 10

### A3

29630-10 .....SU 10

### A2

29620-10 .....SU 10

### A1

29610-10 .....SU 10

### 50 x 70 cm

29682-10 .....SU 10

### 70 x 100 cm

29681-10 .....SU 10